



AGAVE MINERAL MANAGEMENT, INC.
WWW.MINERALMGMT.COM

EAST TEXAS MINERALS - HARDIN COUNTY - FOR LEASE

640 gma/451 nma, Hardin County, TX. These minerals are owned by Cameron Minerals Trust #1. \$200/nma and 20% royalty for a 3-year paid-up primary term Oil and Gas Lease (negotiable).

James Lime and Travis Peak objectives.

These minerals are subject to prior lease, sale or withdrawal; the information presented herein is thought to be reliable but is not warranted; any lease can only be completed through a signed, written agreement. Thank you for your consideration and interest.

Dan C. Perry

Attorney at Law,* and Mineral Management

President - Agave Mineral Management, Inc.

Tel.: 210/821-3377; Mobile: 210/414-0095

E-mail: dperry@mineralmgmt.com

San Antonio Office: 16006 Via Shavano, San Antonio, TX 78249

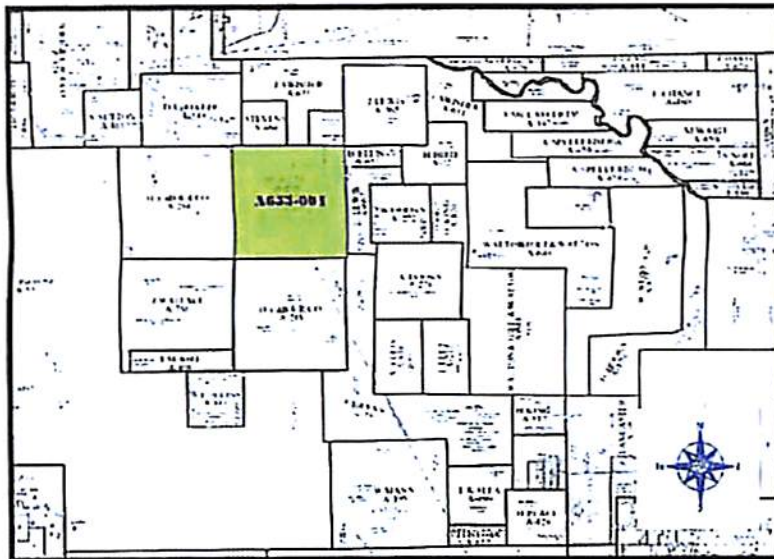
Santa Fe Office: 231 Washington, Suite 3, Santa Fe, NM 87501

* Licensed to practice law in Texas and New Mexico.

Agent - Bud Worthen - (903) 570-5124;
budworthen@gmail.com

Agent - Chris Walker - (903) 571-9830;
christopher.walker@suddenlinkmail.com

CAMERON MINERAL TRUST Nos. 1, 2 & 3



AVAILABLE FEE MINERAL LANDS

GROSS ACRES: 640.000
EST. NET ACRES: 451.168

HARDIN COUNTY, TEXAS

This map has been prepared by L&J Petroleum for the exclusive use of Cameron Mineral Trust. No assurance is given that the information is accurate or that the information is complete. The information is provided for informational purposes only. The information is not intended to be used as a basis for any investment decision. The actual mineral acreage may be more or less than those figures shown. No warranties, express or implied, are made as to the accuracy or completeness of the information shown or its use.

© 2001 L&J PETROLEUM, LP

CAMERON MINERAL TRUST Nos. 1, 2 and 3

**HARDIN COUNTY, TEXAS
AVAILABLE FEE MINERAL LANDS**

PLAT TRACT NUMBER	SURVEY	ABST.	GROSS ACRES	*ESTIMATED NET ACRES
A653-001	M. WESS (H.T&B RR. Section B2)	653	640.0000	451.1680
TOTALS			640.0000	451.1680

*This report has been prepared by PJ Petroleum, LLP for the exclusive use of Cameron Mineral Trust. All information contained herein is confidential and reproduction without the express written consent of PJ Petroleum, LLP is strictly prohibited. The information represented is based upon a cursory review of records held by Cameron Mineral Trust. The actual interest owned may be more or less than those represented herein. NO warranties, covenants or representations are made either express or implied and all information should be independently verified.